

**Sahara** Inspired by bold minimalism, our premium V3 cubicle range boasts an innovative pivot hinge system that's synonymous with opulent interior design and architecture.



# Sahara

Sahara promises to make an impact in premium washrooms thanks to the floating, flush fronts and sleek hardware. With discreet soft self-closing pivot hinges that offer smooth door movement, Sahara really is the epitome of prestigious washroom cubicle design.



**01** Self-closing pivot hinges in stainless steel, with set back pedestals for floating effect.

**02** Indicator bolt with emergency release facility.

See p100-101 for Sahara technical specifications.

## Main image

Sahara cubicles in American Black Walnut crown cut real wood veneer.

For the full choice of veneers, please visit [www.venesta.co.uk](http://www.venesta.co.uk), call our sales team on 01474 353333 or refer to our separate Colour Selector brochure.



## Key features

- A choice of 11 luxurious real wood veneers
- Discreet soft self-closing pivot hinges
- Flush fronted design due to rebated doors
- Minimal look with clean lines and a floating appearance
- Sleek satin anodised aluminium and stainless steel fittings
- FSC certified veneers sourced from responsible and sustainable forests



**Key features**

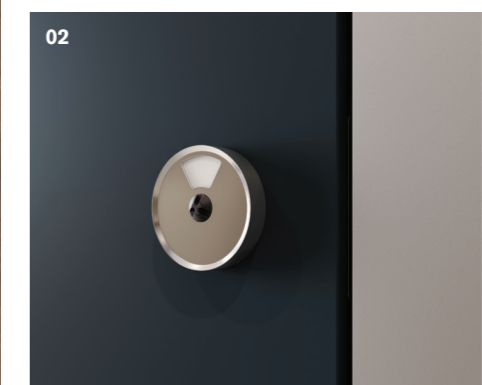
- Hidden soft self-closing pivot hinges
- Flush fronted, floating appearance
- Slimline satin anodised aluminium pilasters and headrail
- Emergency release indicator bolts
- Minimal look and clean lines
- Choose any classic RAL colour
- Height adjustable pedestals

# Sahara

Unique to the Sahara range, the cubicle doors boast our innovative floating pivot hinge system which creates an elegant, smooth door movement. Specify Sahara in HPL, ColourCoat, ColourCoat High Gloss or real wood veneer to make a bold statement and create a modern design fit for illustrious washroom areas.



**01** Slimline satin anodised aluminium headrail and pilasters.

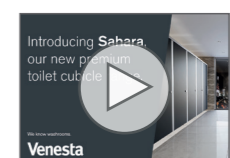


**02** Stainless steel indicator bolt with slimline mortice lock and unique emergency release function.

**Main image**  
Sahara ColourCoat cubicles in Dark Grey (RAL7026). Solid Surface H2 profile vanity in Everest and Gunmetal, with Marden square semi-recessed basins and Hartley mixer taps in matt black.

See p100-101 for Sahara technical specifications.

**ColourCoat**  
ColourCoat is our vibrant range of contemporary spray painted colours. Doors and partitions are sprayed with a coat of primer and finished with 20% gloss pigmented lacquer.



See Sahara cubicles in action by watching our dedicated video on our YouTube channel.

**ColourCoat High Gloss**  
ColourCoat High Gloss is our highly reflective, spray painted colour finish. Doors and partitions are sprayed with a coat of primer and finished with 80% gloss pigmented lacquer.

Note: for V3 products, any colour from the RAL classic colour chart can be chosen, excluding metallic and fluorescent colours.

## Sahara Glass

With a slimline profile, flush fronted design and sleek hardware, Sahara Glass presents an undisputable premium look for the most prestigious commercial washroom areas. Specify either black or white 4mm toughened safety glass clad cubicles to create an effortless, timeless design.



**01** Stainless steel indicator bolt with mortice lock.

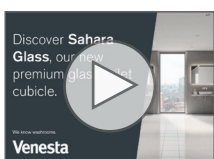


**02** Soft self-closing pivot hinged doors and set back pedestals for floating effect.

See p102-103 for Sahara Glass technical specifications.

### Main image

Sahara Glass cubicles in White. Quartz Q5 profile vanities in Frost with Langley oval vessel basins and Hartley mono vessel basin mixer taps in chrome.



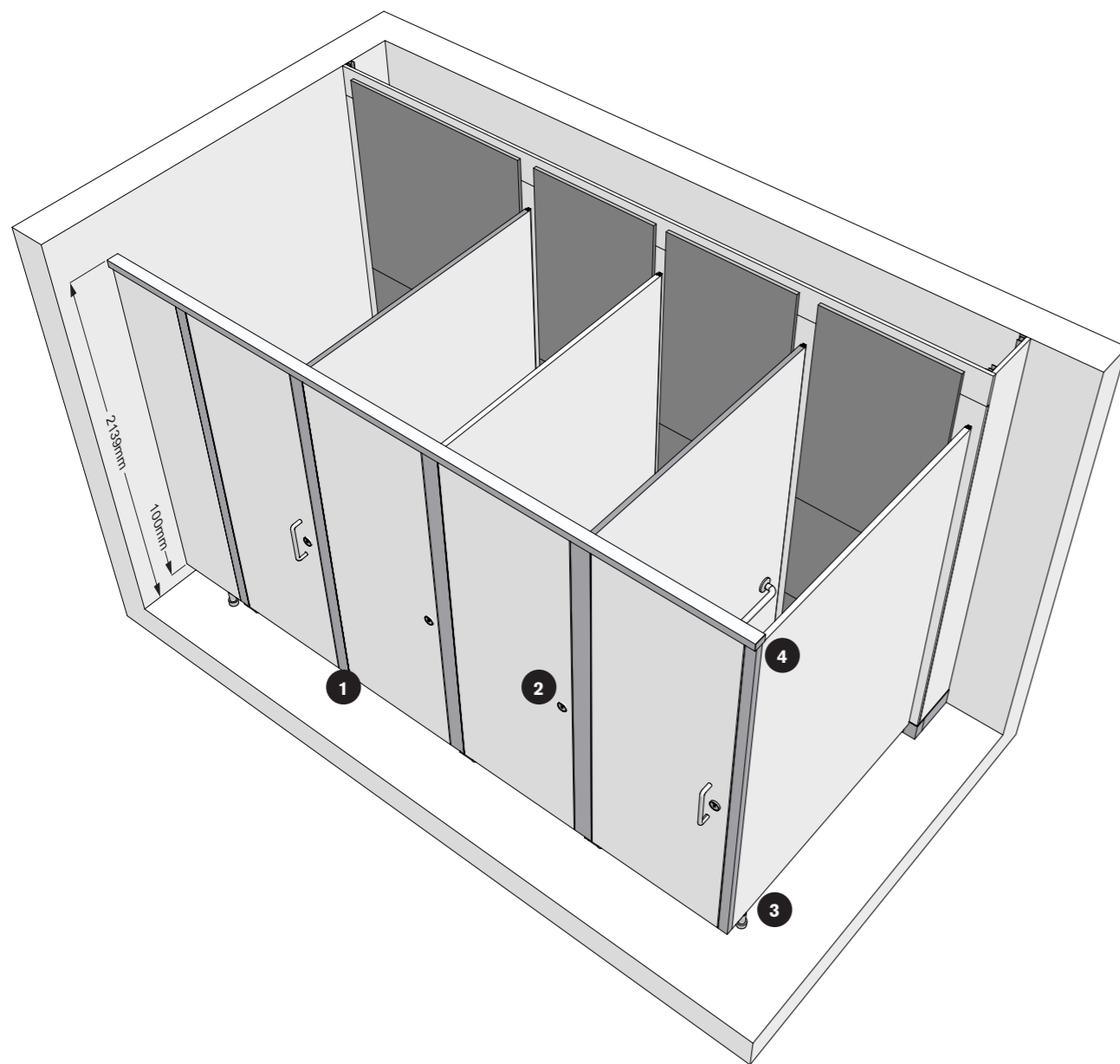
See Sahara Glass cubicles in more detail by watching our dedicated video on our YouTube channel.



### Key features

- Discreet soft self-closing pivot hinges
- Available in black or white 4mm toughened safety glass
- Pilasters clad in glass
- Slimline mortice lock indicator bolts with unique emergency release function
- Flush fronted with floating appearance

# Technical Specifying Sahara



1 Pivot hinge



2 Indicator bolt



3 Pedestal



4 Headrail cap



## Dimensions

<b>Overall height</b>	
HPL	2139mm
ColourCoat	2139mm
ColourCoat High Gloss	2139mm
Vener	2139mm
<b>Maximum height</b>	
HPL	2909mm
ColourCoat	2909mm
ColourCoat High Gloss	2909mm
Veneer	2909mm
<b>Maximum depth</b>	
HPL	2086mm
ColourCoat	2086mm
ColourCoat High Gloss	2086mm
Vener	2086mm
<b>Floor clearance</b>	
	100mm as standard (also a choice of 50mm or 150mm)
<b>Minimum ceiling clearance</b>	
	20mm

## Performance

Available in four material options, Sahara is suitable for the most prestigious washroom environments allowing you to specify with complete confidence.

### HPL

Doors are 36mm nominal thickness and partitions are 26mm nominal thickness, both with an MDF core.

### ColourCoat

Doors are 35mm nominal thickness and partitions are 26mm nominal thickness, both with an MDF core. Sprayed with a coat of primer and finished with 20% gloss pigmented polyurethane lacquer.

### ColourCoat High Gloss

Doors are 35mm nominal thickness and partitions are 26mm nominal thickness, both with an MDF core. Sprayed with a coat of primer and finished with 80% gloss pigmented polyurethane lacquer.

### Veneer

Doors are 35mm nominal thickness chipboard faced with real wood veneer. Partitions are 26mm nominal thickness with an MDF core, faced with real wood veneer. Door and partition edges are lipped with matching ABS from the standard Venesta colour range.

## Detailing

### Panels and doors

Available in HPL, ColourCoat, ColourCoat High Gloss and Veneer.

### Colour finish

#### HPL

34 colours from the standard range.

**ColourCoat and ColourCoat High Gloss**  
Any RAL classic colour, excluding metallic and fluorescent colours.

#### Veneer

11 Alpi real wood veneers (varying price points).

#### Cubicle hardware

Satin anodised aluminium and stainless steel.

### Edge treatment

#### HPL

Matching ABS lipping.

#### ColourCoat

Edges are sprayed with one coat of primer and finished with 20% gloss pigmented polyurethane lacquer.

#### ColourCoat High Gloss

Edges are sprayed with one coat of primer and finished with 80% gloss pigmented polyurethane lacquer.

#### Veneer

Complementing ABS edging from the standard range.

### Pilasters

High strength, slimline extruded satin anodised aluminium pilasters specially designed to conceal fixings.

### Headrail

40mm slimline satin anodised aluminium with matching end cap.

### Cubicle hardware

#### Indicator bolt

Stainless steel indicator bolt with slimline mortice lock and unique emergency release function.

#### Hinge

Stainless steel soft self-closing pilaster mounted pivot hinges, supplied as an assembly.

#### Pedestal

Stainless steel 100mm height adjustable (+10mm) as standard. Also a choice of 50mm or 150mm height pedestals.

#### Fixings

Partition to wall: Satin anodised aluminium Z-clip.

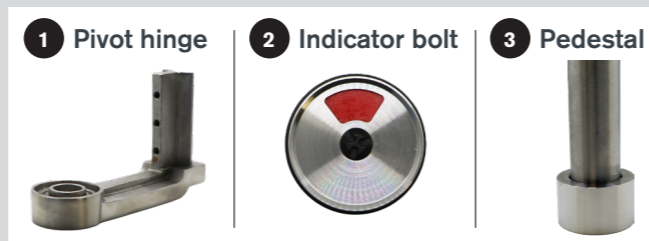
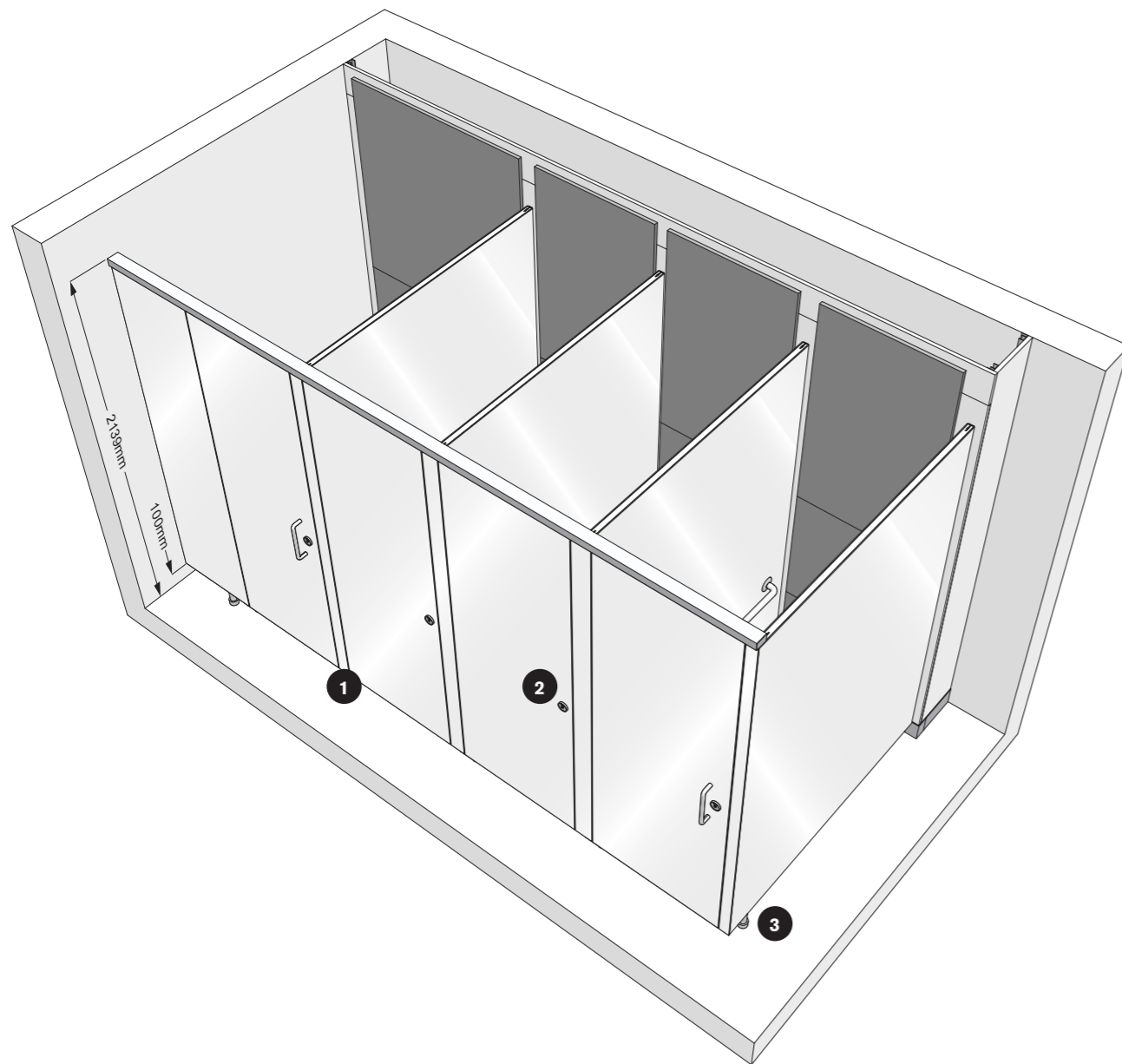
Pilaster to partition: Aluminium Z-clip.

Pilaster to wall: Satin anodised channel and Z-clip.

### Accessories

Coat hooks and toilet roll holders available.

# Technical Specifying Sahara Glass



## Dimensions

**Overall height**  
2139mm

**Maximum height**  
2909mm

**Maximum depth**  
2086mm

**Floor clearance**  
100mm as standard (also a choice of 50mm or 150mm)

**Minimum ceiling clearance**  
20mm

## Performance

### Glass

4mm toughened double back painted safety glass available in timeless black or white.

Doors are 44mm nominal thickness high performance Medium Density Fibreboard (MDF) clad with double back painted safety glass. Partitions are 35mm nominal thickness clad with double back painted safety glass.

## Detailing

### Panels and doors

High performance Medium Density Fibreboard core clad in 4mm toughened double back painted safety glass.

### Colour finish

#### Glass

Black or white.\*

#### Core

Noir or Porcelain.

#### Cubicle hardware

Satin anodised aluminium, stainless steel and powder coated aluminium.

\*Other colours available upon request.

### Edge treatment

#### Glass

Polished.

#### Core

Lipped with 0.5mm matching ABS.

### Pilasters

High strength, slimline extruded satin anodised aluminium pilasters clad in glass, specially designed to conceal fixings.

### Headrail

40mm slimline powder coated aluminium in black or white with matching end cap.

### Cubicle hardware

#### Indicator bolt

Stainless steel indicator bolt with slimline mortice lock and unique emergency release function.

#### Hinge

Stainless steel soft self-closing pilaster mounted pivot hinges, supplied as an assembly.

#### Pedestal

Stainless steel 100mm height adjustable (+10mm) as standard. Also a choice of 50mm or 150mm height pedestals.

#### Fixings

Partition to wall: Satin anodised aluminium T-section.

Pilaster to partition: Satin anodised aluminium T-section.

Pilaster to wall: Satin anodised aluminium channel and Z-clip.

### Accessories

Coat hooks and toilet roll holders available.